



KIT Royal
Tropical
Institute



Policy Document

KIT Royal Tropical Institute, Amsterdam

June 2021

1 Mission Statement

Based on a national heritage site in Amsterdam, KIT Royal Tropical Institute is an independent centre of expertise and hospitality dedicated to sustainable development.

Guided by the Sustainable Development Goals (SDGs) of the United Nations, we assist governments, NGOs, and private corporations around the world to build inclusive and sustainable societies. Our experts provide research, advisory and training services focussing on global health, economic development, gender and intercultural communication.

Our campus in Amsterdam is one of the city's leading sustainability hotspots. It houses an education centre for students and professionals, including a graduate school in global health. Our hospitality offering comprises De Tropen Café & Restaurant, an eco-friendly hotel, and complementary conference and events facilities. We are also home to SDG House: a thriving community of sustainability experts, social entrepreneurs, and NGOs, with a membership of more than 70 organisations.

2 History

2.1 Colonial Institute

KIT Royal Tropical Institute was founded in Amsterdam in 1910 as the 'Colonial Institute' to gather and disseminate knowledge about the Dutch overseas territories with a view to promote trade and industry and combat tropical diseases. The Institute, which officially opened in 1926, housed three research departments - on 'tropical hygiene', 'tropical products' and 'ethnology' - a library, and a museum with a collection of objects and artifacts mainly from the Dutch East Indies. Founding members of the Institute included the Ministry of the Colonies, the City of Amsterdam, Artis Royal Zoo, and a host of private companies and individuals with interests in the colonies.

2.2 Royal Tropical Institute

In the aftermath of decolonisation, in 1952 the Institute was renamed KIT Royal Tropical Institute (KIT - Koninklijk Instituut voor de Tropen) and it acquired a new mission in service of international cooperation with the newly independent nations that emerged in the post-colonial era. In the ensuing decades, KIT has gained an international reputation for its expertise on health, gender and agricultural development, its intercultural training courses, and its health education programme, attracting students from around the world.

In 2014, KIT Royal Tropical Institute became a fully self-financed organisation, independent from public funding. The Tropenmuseum became a separate entity, merging with the Afrika Museum in Nijmegen, the World Museum in Rotterdam, and Museum Volkenkunde in Leiden into the Nationaal Museum van Wereldculturen (NMVW, National Museum of World Cultures).

2.3 The Building

KIT Royal Tropical Institute is located in a historic, neo-renaissance building at the edge of the Oosterpark, designed by the architect J.J. van Nieukerken and sons. Specially designed and decorated as the home of the Colonial Institute, the building is a testimony to the Dutch colonial era. The building, which also houses the Tropenmuseum, has been designated a national monument.

In the past decades the building has been restored and expanded. A hotel was built on the campus of the Institute in 1976.

2.4 SDG House

The building continues to play a key role in KIT's mission. Since 2017, it is home to SDG House, a community of more than 70 organisations that work towards achieving the Sustainable Development Goals of the United Nations.

SDG House is the hotspot in Amsterdam for sustainability events and entrepreneurship, and acts as a catalyst for sustainability initiatives: a place to meet, exchange ideas and build partnerships for those seeking innovation, education and collaboration in sustainable development.



3 Expertise & Activities

3.1 Sustainable Economic Development

KIT Sustainable Economic Development generates and shares applied knowledge derived from practice to improve the Page 6 of 14 performance of companies and organisations that pursue sustainable and inclusive agricultural development.

Themes:

Agricultural Innovation; Food Value Chains; Gender and Agriculture; Impact Investment; Land Governance; Textile and Garment Industry; Youth Employment.

Services:

Impact Assessment; Project Support Services; Sharing Knowledge; Strengthen Performance.

3.2 Gender

KIT Gender is an international team of gender specialists that focuses on gender aspects of health and social and economic development. Expertise: gender rights, integration, capacity development and action research.

Themes:

Access to Justice; Engendering Education; Gender, Citizenship and Governance; Gender Equity and Value Chain Development; Gender, Rights and Health; Land, Food and Energy.

Services:

Evaluation and Assessments; Holding the Critical Edge; Research; Programme Development; Policy and Strategy Development; Training, Coaching and Mentoring.

3.3 Health

KIT Health focuses on improving the quality of healthcare in developing countries through research, analysis, research, project design and management, training and postgraduate healthcare education. KIT is recognized by the World Health Organisation (WHO) Collaborating Centre for the training, retention and motivation of workers in the healthcare sector.

Themes:

Epidemiology in Public Health; Health System Strengthening; Sexual and Reproductive Health and Rights.

Services:

The KIT MATCH approach for enhancing TB care coverage; Good Epidemiology Practice; Health Systems Research; Evaluations; Institutional Capacity Building; Project Advisory; Facilitating Policy Formulation; Linking and Learning; Strengthening Health Institutes; Tailor-Made Training.

3.4 KIT Scholarship Fund

In line with our Health expertise, KIT established the KIT Scholarship Fund. For 50 years, KIT has educated doctors, nurses and other health professionals from around the world to become leaders and experts in international health. We do this by providing training in the field of international and public health. Students from all over the world follow master's programmes or short courses at KIT and afterwards often make a substantial difference in the health care situation in their country.

Most students of KIT study in the Netherlands with a scholarship. However due to a fall in available scholarships fewer students have this opportunity. We are convinced that investing in future leaders and experts in health care helps to improve international health. The financial support from the scholarship fund is given to one student but is of benefit to entire communities.

3.5 Intercultural Professionals

KIT Intercultural Professionals provides expertise for international success through advice and training on doing business with and living in other cultures. Clients include individuals and whole management teams.

3.6 Conferences and Events

KIT Royal Tropical Institute is a unique venue for conferences and events. What makes our location so special? The historical building with a variety of elegant rooms, the personal contact with our clients and last but not least: by organising an event in our venue people contribute to a more sustainable world as the proceeds are re-invested in KIT's knowledge units.

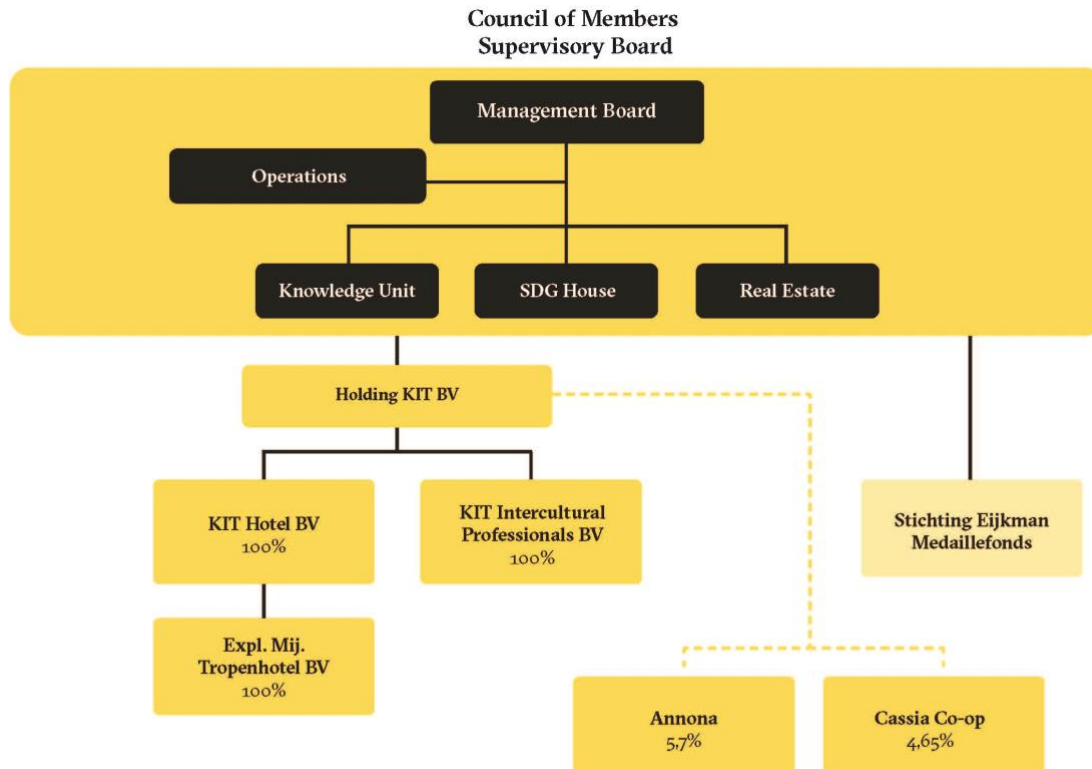
3.7 De Tropen Café and Restaurant

The café is situated in KIT's monumental building and offers a wide variety of food inspired by world cultures and tastes, using ingredients that are locally sourced. Profits are reinvested in the Knowledge Institute, so by eating or drinking in De Tropen customers are also contributing to sustainable development.

3.8 Amsterdam Tropen Hotel

The hotel is located on the grounds of KIT and expresses Institute's core values. With multicultural staff, guests from all corners of the world, the proceeds of the hotel are fed back into the Institute's Knowledge Units.

4 Governance & Management



KIT Royal Tropical Institute has the statutory form of an association with private and corporate members. The governing bodies of the association are the Council of Members, the Board of Directors and the (single-headed) Executive Board. The Institute also has an Advisory Board, consisting of leading international experts in its fields of operation. The Board of Directors oversees the work of the Executive Board. The Directors in their turn are accountable to the Council of Members.

The Council of members, the Board of directors and the Advisory Board don't get any remuneration for their work. Although the WNT (Wet Normering Topinkomens) no longer applies to KIT, the remuneration of its Executive Board is in accordance with the regulations set by this law. No natural person or legal entity (apart from the association itself) has the association's capital at its disposal as if it was their own capital.

5 Boards and Council Supervisory board

Chairperson

Mr P.F.W. (Paul) Strengers

Former Director Medical Affairs and Product Development Sanquin Plasma Products

Executive Director International Plasma and Fractionation Association Member of the WHO

Expert Committee on Biological Standardization Former Chair of the Red Cross District of Amsterdam-Amstelland

Vice-chairperson/Chair Audit Committee

Mr H.M. (Maarten) le Clercq

Former Chair Supervisory Board Spaarne Gasthuis Former CEO Sanquin Bloedvoorziening

Former CEO Ipse/de Bruggen Former member Executive Board Leiden University Medical Center Formerly with Royal Dutch Shell

Member Audit Committee

Mr P.J. (Philipp Jan) Flach

CEO Logex Former member Executive Board of Slotervaartziekenhuis in Amsterdam and the MC Groep hospitals in Lelystad, Emmeloord and Dronten

Ms L.G. (Linda) Broekhuizen

Chief Investment Officer, Management Board Member FMO, Dutch Development Bank

Member of the Development Cooperation Committee (COS) Advisory Council on International Affairs Member, Appeals Committee for Disciplinary Court, Banking and DSI Member of the

Advisory Committee Guarantee SME (BMKB) Ministry of Economic Affairs Member of the

Board of Directors NCH, Netherlands Center for Trade Promotion Member Stichting

Netherlands Advisory Board on Impact Investing (NAB) Member Board of Directors of EDFI (the association of bilateral European Development Financial Institutions)

Ms J. (Joyeeta) Gupta

Prof. on Environment and Development in the Global South, UvA Co-chair of Earth

Commission Member of Board of SNV Formerly, Board of Oxfam Novib Formerly, co-chair of

UNEP's Global Environmental Outlook Formerly, Vice President, Commissie Ontwikkelings-samenwerking (COS) Formerly, Member, Adviesraad Internationale Vraagstukken (AIV)

Mr J.M. (Jacques) Kwak

Former Partner Colliers International Board member St. Gastenverblijven VUmc

Management Board

Mr M.M. (Mark) Schneiders

CEO KIT Royal Tropical Institute Director Corporation of European Pharmaceutical Distributors (CEPD), NV Voorzitter bestuur Sint Antonius Stichting Member Board of Directors International Fertilizer Development Center (IFDC)

Council of Members

Mr M. (Miltiadis) Gkouzouris

CEO HVA International

Mr P.L. (Pierre) van Hedel

Former CEO Rabobank Foundation

Mr M.M.J.W. (Maarten) van Herpen

Founder & Managing Director Acacia Impact Innovation BV Former Head Philips Africa Innovation Hub

Mr R. (Rogier) de Jong On behalf of ABN AMRO Bank (from September) Chief Risk Officer of International Card Services

Mr J.C.A. (Jacob) de Jonge Former Supervisory Board Migros Ticaret A.S. Istanbul, Turkey Advisor Thalad Thai Bangkok, Coach Startupbootcamp Former CEO/Director Makro Asia, Walmart, Bijenkorf, Agriretail, Bank of Asia, V&D

Ms S. (Saskia) Kapinga on behalf of Shell Vice President External Relations – Benelux & France

Mr J. (Jeroen) Kohnstamm Advisor to the Ministry of Commerce in China (MOFCOM) Chair Dr. Olfert Dapper and China Foundation Former Secretary General of Factors Chain International

Mr J.A. (Johan) de Koning M.Phil on behalf of Unilever Economic advisor Unilever Head of External Affairs Unilever Nederland

Mr M. (Marinus) Pannevis Former Lawyer/curator DLA Piper Nederland NV Chair Stichting Havenstraat Chair Stichting Syrische Vrijwilligers Nederland Chair Stichting Philomela Board member Volksuniversiteit Amsterdam

Mr F. (Floris) Recourt on behalf of De Maatschappij Former Partner of Egon Zehnder International Partner Commissarissensearch Executive Coach, Board Evaluator, Trusted advisor

Ms R. (Rolien) van Rijckevorsel-van Dijk (until 25 August) Moderator and facilitator of innovation Member of the board Cloverleaf Foundation Owner of Summerschool/Winterschool

Mr H. (Herbert) Schilthuis Global Director Health Heineken International BV

Mr R. (Rembrandt) Sutorius on behalf of ARTIS Amsterdam Royal Zoo Director

Ms Y.E.M. (Yolanda) Verdonk-van Lokven on behalf of NS NS Director HR & Organization Member Supervisory Board NVP Chair Stichting Jan van Stappenspoorprijs Member Advisory Board Dutch Banking Association

Ms I. (Irene) Visser Head of strategy & International Relations at Atradius Dutch State Business Former Managing Director Netherlands – African Business Council

Mr R.G. (Rob) de Vos Board member of AKVO; Board member of Foundation Max van der Stoel Advisory Board member of the Orange Knowledge Programme of the NUFFIC Scholarships Former Diplomat Ministry of Foreign Affairs

Ms K. (Karin) van der Wansem on behalf of the City of Amsterdam Director Mayor's Office of Amsterdam

Mr J.M.M. (Jack) van de Winkel on behalf of Deli Maatschappij Former President of NV Deli Maatschappij

Special advisor to the Council

Ms Sj.A. (Sjoukje) Rullmann (until 19 November) Member Supervisory Board Nationaal Museum van Wereldculturen Member Supervisory Board Wereldmuseum Rotterdam Chair Complaints Committee NICAM (Netherlands Institute for the Classification of Audio-visual media/Kijkwijzer) Chair Advertising Code Committee Former Vice President Rechtbank Amsterdam

KIT Management

Mr M. (Maarten) van den Berg - Manager Marketing & Communications
Mr L. (Louis) van den Berghe - Manager Finance & Operations
Mr P. (Peter) Gildemacher - Head of Knowledge Unit
Ms I. (Ineke) Noordhoek - Director KIT Hotel BV
Mr J. (Jader) Franklim Pinto (until 1 October) - Director KIT Intercultural Professionals
Ms A. (Annerink) Post - Manager Human Resources
Ms M. (Marielle) van Rumpt - Director KIT Hotel BV
Ms L. (Lindy) van Vliet - Head of Knowledge Unit

Holding KIT BV

Mr M.M. (Mark) Schneiders - Management Board of Holding KIT BV
Mr J. (Jader) Franklim Pinto (until 1 October) - Director of the Executive Board KIT Intercultural Professionals BV
Ms I. (Ineke) Noordhoek - Director of KIT Hotel BV
Ms M. (Marielle) van Rumpt - Director of KIT Hotel BV

KIT Works Council

Mr H. (Hermen) Ormel KIT Health Advisor Chairperson (until March) Dual council member with Julie Newton (from March)
Mr A. (Anton) Sneep Finance & Control Project Administrator Vice Chairperson (until March)
Ms L. (Lucie) Blok KIT Health Advisor (until March)

Ms C. (Coosje) Hoogendoorn KIT Sustainable Economic Development and Gender Advisor (until March)

Ms L. (Lonneke) van der Waa Project Office Project Officer (until March)

Ms I. (Irina) Wagner KIT Health Advisor (until March)

Ms J. (Julie) Newton KIT Sustainable Economic Development and Gender Advisor (until March) Dual council member with Hermen Ormel (from March)

Ms E. (Elisabeth) Kleipool KIT Health Advisor Co-chairperson (from March)

Mr P. (Pierre) Pratley KIT Health Advisor Co-chairperson (from March)

Ms A. (Amy) Spaan Project Office Team Leader Vice Chairperson (from March)

Ms B. (Bianca) Tolboom KIT Health Advisor (from March)

Ms D. (Debby) de Vries Marketing & Communication - Content Manager (from March)

6 Financial Report

Consolidated Balance Sheet as of December 31, 2020

(Before Appropriation of Results)

x € 1,000	2020	2019
Assets		
Tangible fixed assets	19,874	21,246
Intangible fixed assets	108	213
Financial fixed assets	2,306	2,717
Stocks	28	44
Project amounts to be received	1,543	2,964
Receivables	2,939	3,319
Cash	19,249	14,721
Total Assets	46,047	45,224
Equity and Liabilities		
Equity	30,633	30,954
Provisions	1,546	1,896
Current liabilities	13,868	12,374
Total Equity and Liabilities	46,047	45,224

Results of the individual departments of both KIT and KIT Holding BV

x € 1,000	2020	2019
Health	350	302
Sustainable Economic Development & Gender	(304)	10
Results for Knowledge Unit	46	312
SDG House	(137)	-
Real Estate	1,832	952
NOW Subsidies	1,282	-
Results for line departments	3,023	1,264
Results for staff departments	(39)	80
Total results for all departments of KIT Royal Tropical Institute	2,984	1,344
Release/Dotation Provisions	158	836
Results KIT Royal Tropical Institute	3,142	2,180
KIT Hotel BV	(3,441)	3
NOW Subsidies	366	
TVL/TOG Subsidies	134	
Result KIT Hotel BV	(2,941)	3
KIT IP BV	(516)	(298)
NOW Subsidies	75	
TVL/TOG Subsidies	16	
Result KIT IP BV	(425)	(298)
Holding KIT BV	(96)	246
Results, Holding KIT BV Consolidated	(3,463)	(49)
Result Foundation	-	-
Consolidated results	(321)	2,131

7 Multi-Annual Strategy

Our multi-annual strategy 2021-24 strives to enhance the impact and profile of our knowledge work, while transforming our campus in Amsterdam into a leading centre of expertise, education, hospitality, and entrepreneurship dedicated to the Sustainable Development Goals (SDGs).

Our strategy comprises a set of strategic priorities and projected impact outcomes on the SDGs that we address in our work and a Theory of Change that guides implementation.

One of the priorities in our knowledge work is to build a global partnership organisation: an association comprised of independent but like-minded and strongly connected organisations on all continents. We believe this can replace the North-South model of sub-contracting local consultants and partners, which is becoming obsolete.

Another priority is to develop an agenda-setting knowledge agenda and raise our capacity to assert thought leadership on key areas of our expertise. By amplifying our voice and insights, we hope to increase the impact of our knowledge on policy and practice while gaining influence on national and international policy agendas.

We also strive to achieve more impact by broadening and strengthening our education offer. We aim to empower individuals and educational institutions to act as agents of change around the world.

In Amsterdam, we will further develop our campus into a sustainability hotspot: an inspiring place to stay, work, learn and meet for all who share our mission to build an inclusive and sustainable world. We will invest in sustainable hospitality and other on-site facilities and activities to stimulate collaboration, learning and action on the SDGs in the Netherlands.